

3.0 mm | 20 mil & 3.0 mm | 30 mil
LOFTEN™
FLEXIBLE GLUE DOWN

PROSERIES™
LUXURY VINYL FLOORING
daltille



Children's Hospital



SuperGuardX™
REINFORCED SHIELD

3.0 mm | 20 mil & 3.0 mm | 30 mil

LOFTEN™

FLEXIBLE GLUE DOWN

Infuse color and texture into any space with Loften, our expansive luxury vinyl series. Available in a realistic limestone visual and fabric visual with a neutral color palette. The fabric visual also comes in an array of special-order hues that coordinate with our signature Color Wheel™ glazed ceramic collection. The size package consists of modular formats, including 6 x 24, 12 x 24, and 24 x 24 that can be installed together to create patterns. In addition, mix and match sizes and colors for a truly custom design. Look no further for a colorful commercial solution, this series has an ultra-durable 30 mil wear layer for heavy commercial application via the special-order platform. This product line is perfect for education and health care applications.

LIMITLESS POSSIBILITIES

- Limestone & Fabric visuals
- Modular sizes: 6" x 24", 12" x 24" & 24" x 24"
- Fabric accent colors coordinate with our Color Wheel™ Classic glazed ceramic collection
- 3.0 mm Thickness

DURABLE DESIGN

- SuperGuardX™ Technology
- 20 mil wear layer for commercial applications & 30 mil wear layer for heavy commercial application via special order
- 100% Waterproof
- Commercial Grade 100% Virgin Vinyl



Cover photo features Loften™ fabric visuals on the floor and stairs.
Above photo features Loften™ limestone visuals on the floor.

3.0 mm | 20 mil & 3.0 mm | 30 mil

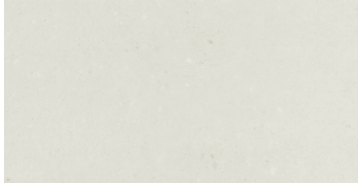
LOFTEN™

FLEXIBLE GLUE DOWN

SIZES:



6" x 24" | 12" x 24" | 24" x 24" – LIMESTONE



MINERAL LIMESTONE LF01



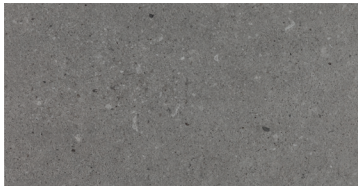
PEBBLE LIMESTONE LF02



SMOKE LIMESTONE LF03

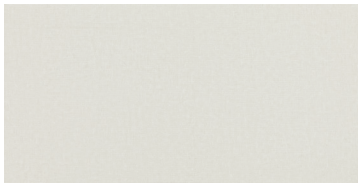


GRAVEL LIMESTONE LF04

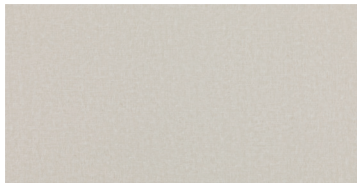


COAL LIMESTONE LF05

6" x 24" | 12" x 24" | 24" x 24" – FABRIC - NEUTRAL COLORS



MINERAL FABRIC LF06



PEBBLE FABRIC LF07



SMOKE FABRIC LF08



GRAVEL FABRIC LF09

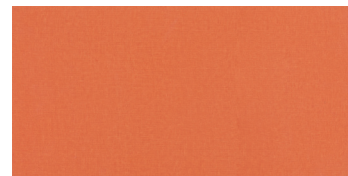


COAL FABRIC LF10

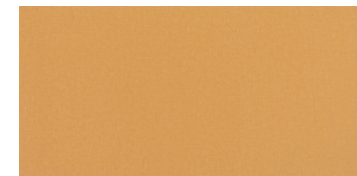
6" x 24" | 12" x 24" | 24" x 24" – FABRIC - ACCENT COLORS – (SPECIAL ORDER)* LOFTEN ACCENT COLORS COORDINATE WITH COLOR WHEEL™ - GLAZED CERAMIC COLLECTION



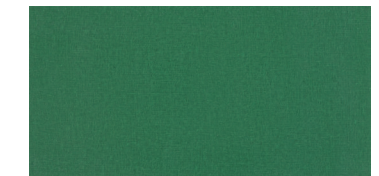
CURRENT FABRIC LF23
*COORDINATES WITH
CURRENT SH17



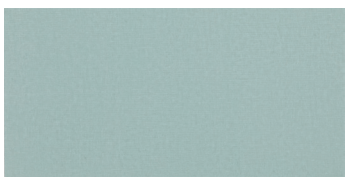
ORANGE BURST FABRIC LF27
*COORDINATES WITH
ORANGE BURST 1097



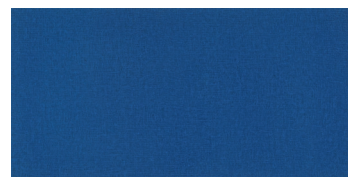
MUSTARD FABRIC LF25
*COORDINATES WITH
MUSTARD 1012



EMERALD FABRIC LF26
*COORDINATES WITH
EMERALD 0115



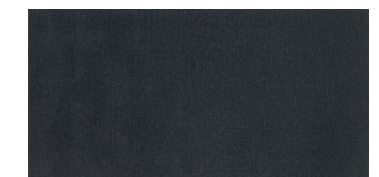
SPA FABRIC LF28
*COORDINATES WITH
SPA 0148



SEA BREEZE FABRIC LF22
*COORDINATES WITH
SEA BREEZE 1174



GALAXY FABRIC LF24
*COORDINATES WITH
GALAXY 1469



BLACK FABRIC LF21
*COORDINATES WITH
BLACK K111

3.0 mm | 20 mil & 3.0 mm | 30 mil
LOFTEN™
 FLEXIBLE GLUE DOWN



NOISE REDUCING



EASY TO CLEAN



100% WATERPROOF



100% VIRGIN VINYL

SPECIFICATIONS	3.0 mm 20 mil	*3.0 mm 30 mil	
Product Type:	LVF Dry Back	LVF Dry Back	
Installation:	Glue Down	Glue Down	
Thickness:	3.0 mm	3.0 mm	
Wear Layer:	20 mil (0.508 mm)	30 mil (0.762 mm)	
Finish:	SuperGuard X™ Technology	SuperGuard X™ Technology	
Underlayment:	N/A	N/A	
Bevel:	Micro Beveled	Micro Beveled	
Embossing:	Embossed	Embossed	
Plank Variation:	N/A	N/A	
Size:	6 x 24	12 x 24	24 x 24
Sq. Ft./Carton:	36	36	36
Pieces/Carton:	36	18	9
Weight:	1.04 lbs pc / *1.03 lbs pc 37.44 lbs pc / *37.08 lbs pc carton	2.08 lbs pc / *2.06 lbs pc 37.44 lbs pc / *37.08 lbs pc carton	4.16 lbs pc / *4.12 lbs pc 37.44 lbs pc / *37.08 lbs pc carton
Warranty:	Limited 15 Year Commercial Limited Lifetime Residential	Limited 10 Year Heavy Commercial Limited 30 Year Commercial Limited 20 Year Multifamily Units Limited Lifetime Residential	

Installation Advisory: Glue Down LVF must be installed using ProSeries™ Adhesive and ProSeries™ High-Performance Adhesive by Daltile. See daltile.com/LVF for more recommended installation and adhesive information.

Stocking Platform and Colors:	3mm 20 mil: Neutral Fabric and Limestone Colors
* Special Order Platform and Colors:	3 mm 20 mil: Accent Colors Fabric 3 mm 30 mil: Neutral Fabric and Limestone colors 3 mm 30 mil: Accent Colors Fabric Minimum order: one full pallet Additional Platforms available on special order. Minimum order quantities apply. Contact your Daltile representative for additional information.

PERFORMANCE & CHARACTERISTICS

Construction:	Commercial Grade Luxury Vinyl Flooring; 100% Virgin Vinyl
Classification:	Class III, Type B Embossed
Squareness:	ASTM F2421 - Passes - +- 0.010" max
Size and Tolerance:	ASTM F2421 - Passes +-0.016 in./linear foot
Thickness:	ASTM F386 - Passes - Pass & A tolerance of ±0.13mm
Flexibility:	ASTM F137 - Passes - 1" mandrel
Dimensional Stability:	ASTM F2199 - Passes - 0.020 in./ lin Ft (0.51mm/305 mm) Maximum
Static Load Limit:	ASTM F970 - Passes
Residual Indentation:	ASTM F1914 - Passes - Average ≤8% Max ≤10%
Resistance To Chemicals:	ASTM F925 - Passes - No more than a slight change
Resistance To Light:	ASTM F1515 - Passes - ΔE ≤ 8
Resistance To Heat:	ASTM F1514 - Passes - ΔE ≤ 8
Critical Radiant Flux:	ASTM E648 - Passes - Class 1 (> 0.45 W/cm²)
Smoke Density:	ASTM E662 Part A - Passes - < 450

NOTES
 See daltile.com/LVF for recommended installation and care guidelines.



CERTIFIED BY SCS Global Services

7834 C.F. Hawn Freeway,
 Dallas, Texas 75217 | 1.800.933.TILE

To view the complete collection of Daltile® products and information, visit our website at daltile.com/LVF

PROSERIES™
 LUXURY VINYL FLOORING



©2023 Dal-Tile, LLC (6/23)